

LED Cabinet Light

MODEL: QS-107T-2.2W



Features

- Input 12V or 24V DC
- 2.2W
- 80+ CRI
- Recessed or surface mounted
- Multiple colors of surface finish
- Uniform luminance

Special Points

- Changeable trim ring with magnet
- 7mm thickness, slim structure

Quality LED Co., Ltd.

Add: Block A, Huilongda Industrial Park, Shilongzai, Shiyan, Bao'an, Shenzhen, China
Tel: 0086-755-23467191 Fax: 0086-755-23102191
Email: export@quality-led.com
Website: www.quality-led.com Website: <http://quality-led.en.alibaba.com>



5 years warranty

DATASHEET

LED Cabinet Light

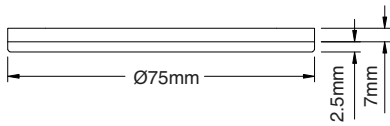
Model: QS-107T-2.2W

Changeable Trim Finish Color

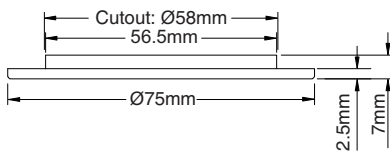


White Black Silver Nickel

Mechanical



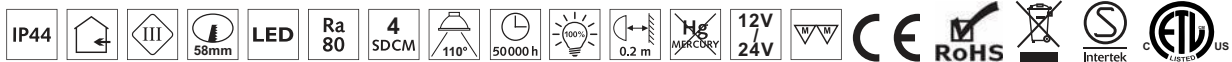
Surface mounting



Recessed mounting

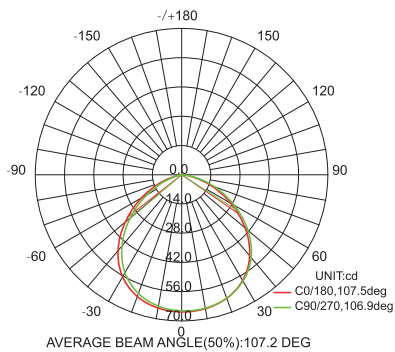
General

Color Temperature(CCT)	2700K / 3000K / 4000K / 5000K
Power Consumption(W)	2.2W
Input Voltage	12V or 24V DC
Light Source	0.1W SMD LED
Lumen	80lm/W
CRI (Ra)	80
Beam Angle	110°
Material	High quality heat conductive plastics
Fixture Color	White / black / silver grey / nickel
IP Grade	IP 44
Environment	Indoor use
Operation Temperature	Max Ta=45°C
Lifespan	50,000hrs
Certification	CE, RoHS, S, ETL
Warranty	5 years



Goniophotometers System Test Report

110°	H(m)	Lux	Ø(cm)
	1	50.2	239.38
	2	12.55	478.77
	3	5.578	718.15
	4	3.137	957.54
	5	2.008	1196.9



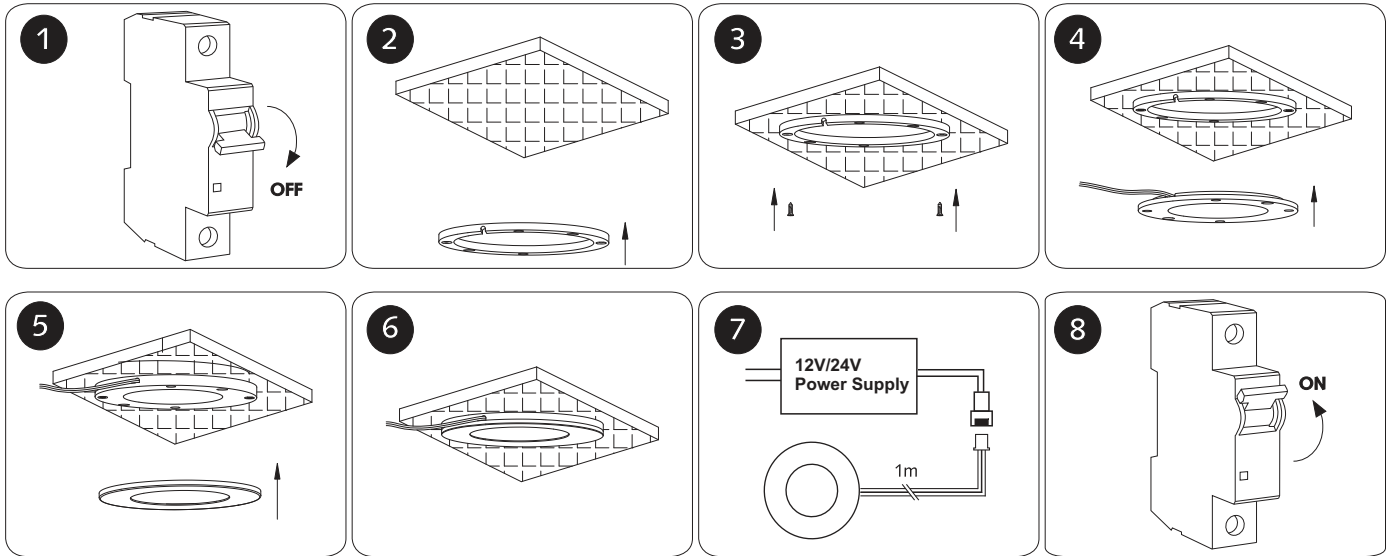
DATASHEET

LED Cabinet Light

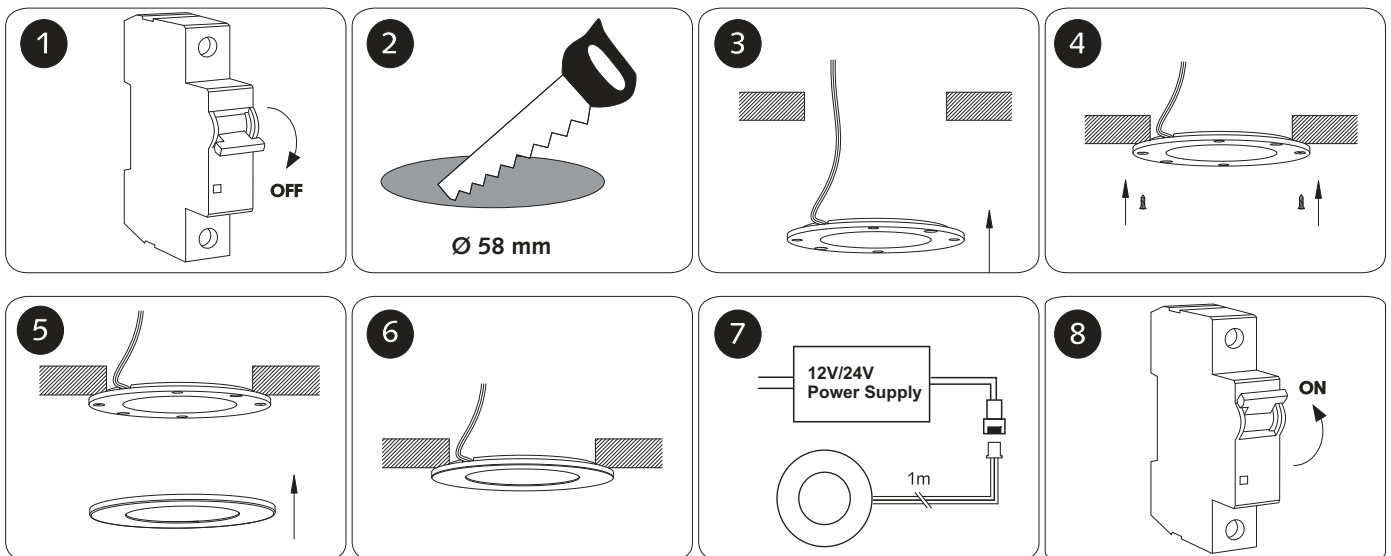
Model: QS-107T-2.2W

Installation

Surface mounting



Recessed mounting



DATASHEET

LED Cabinet Light

Model: QS-107T-2.2W

Application

- Cabinet light
- Closet light
- Display case
- Jewelry store
- Museum
- Walkway
- Household
- Hotel
- Entertainment places, etc.



Packaging

Packaging Measurement	Master Carton
Unit per Carton	100pcs
Dimension	45*45*27cm
Net Weight / Gross Weight	15kgs / 16.5kgs

Warranty

Quality LED Warrants to its customers who purchase its LED fixtures that the products are free from defects in material and workmanship from the date of shipment. During warranty period, Quality LED, at their discretion, agrees and shall be obligated to a limit of refund of the purchase price of the products or replacement of fixtures.

This limited warranty will not apply to loss or damage to the product caused by: damage due to fire or acts of God; vandalism; civil disturbances; accident; failure to follow installation, operating or maintenance. This limited warranty excludes field labor and service charges related to the repair or replacement of the Product.

Complete warranty details for fixtures are available. Please contact our salesperson.